



TMS E-News

8/27/2021

TMS DOES NOT UNLOCK THE DOORS UNTIL 7:40 A.M.

TMS Families:

On Thursday afternoon we experienced significant storms here at TMS. Something that we learned from our staggered dismissal was that many of our TMS students were not aware of their family's phone numbers or their addresses. We were able to find this info manually but we also wanted to let our families know so they can work on this with their students. Thanks for your support with this!

*****IMPORTANT MORNING DROP-OFF and AFTERNOON
PICK-UP INFORMATION*****

Parents, please make sure students bring their lunch cards with them to school.
We want them to have as much time as possible to enjoy their lunch.
Using their card gets them through the lunch line so much quicker.

UPCOMING IMPORTANT DATES

Aug. 30 - Join Builders Club - TMS Open House 3:05-3:45 - Cafeteria - See Flyer

Aug. 31 - Meet the Teacher - 5:30-7:00 pm

Sept. 3 - No School/Professional Development Day

Sept. 6 - No School/Labor Day

Sept. 10 - Picture Day - See Flyer

6th Grade Parents/Guardians,

Please complete the 6th Grade Student Contact Information Form (if you have not already done so).

This form will be used by ALL 6th grade teachers. Please only complete this form once per child in 6th grade.

This information helps the 6th grade staff get to know your child, and informs us who to contact to ensure that your child has a great year in 6th grade. We are looking forward to our year together!

Link to form: <https://bit.ly/2VIF6ML>

Thank you,

6th Grade Staff

Yearbook News

If for some reason you forgot to order a yearbook from last year and you still would like to have one, you are in luck. I have a few copies of last year's yearbook available for sale. The cost of the yearbook is \$28 either in cash or made payable to TMS and can be purchased on a first come first serve basis. If you would like a copy please send me an email at burchs@talawanda.org and I will have one in the office for you to pick up.

PLEASE SEE THE FLYER BELOW FOR OUR UPCOMING PICTURE DAY!
WE WILL PASS OUT PAPER FLYERS THE WEEK OF PICTURE DAY.

Lifetouch.



Picture Day is Coming!



School Name: Talawanda Middle School

Picture Day Date: Friday, September 10

Picture Day ID: EVT3XGJ3T

PICTURE DAY KIT



We have pulled together a Picture Day Kit, that can be used to help inform your families of your upcoming Picture Day. Your personalized Picture Day Kit should be arriving at your school soon!

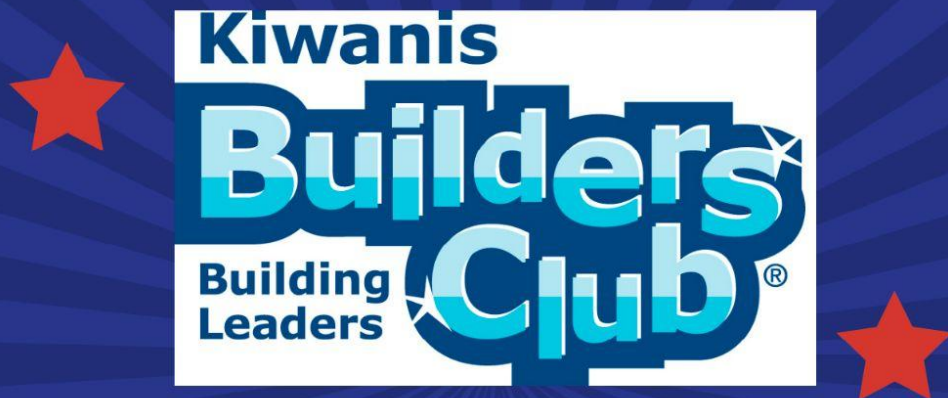
Picture Day safety is still our top priority. [Click here](#) to learn more about the protocols we've implemented this year.



Questions? Contact your **Lifetouch** Representative.

Y O U A R E I N V I T E D

JOIN TMS BUILDERS CLUB!



WANT TO LEARN MORE?
JOIN US FOR OUR OPEN HOUSE!
MONDAY, AUGUST 30TH
3:05-3:45 P.M.
TMS CAFETERIA

Questions? See Mrs. von Mizener or Mrs. Macechko

B U I L D L E A D E R S H I P S K I L L S

P R O V I D E S E R V I C E T O
S C H O O L & C O M M U N I T Y

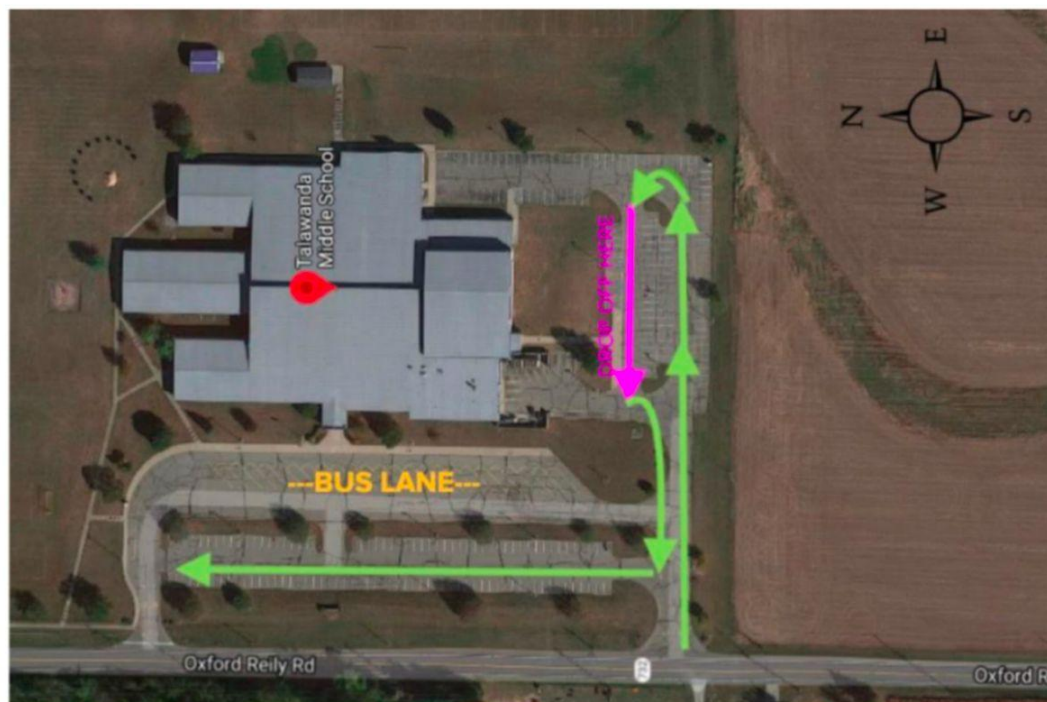
H A V E F U N !

TMS Morning Drop Off Procedures

Talawanda Middle School will open the doors for students at 7:40am. Students can enter the building, take their coats to lockers if needed, and report to the cafeteria for breakfast or first period.

When you enter the parking lot, the line of cars should be continuously moving (see image below). If you arrive earlier than 7:30am and need to wait for your student to exit the car, please park in a spot between the basketball hoops. There is plenty of space outside for students to safely keep distant from others while waiting just a few minutes for the doors to open. Please have your student exit the vehicle as soon as you pull alongside/parallel the building (the pink section of the image below). This allows 5-8 cars to drop off at the same time and the line moves significantly faster.

Be careful to note that the busses will also be entering the parking lot and will need to have the right of way as they attempt to enter the bus drop off lanes in the front of the building.



AFTERNOON PICK UP

Following a similar path into the property, cars should park within parking spots along the Commons. Please do not block parking spots near the dumpsters as those are for staff arriving during the same time. Students are prohibited from crossing the bus parking lot toward cars in the upper parking lot.

2021-2022 TMS Clubs/Activities

Art Club

Advisor: Gary Robertson - robertsong@talawanda.org

Description:

This club is all about art! We look at art, talk about art, and most importantly make art. The TMS Art Club is supported by the Oxford Community Arts Center and we collaborate with local artists. We will spend several meetings learning about and making artwork around a central theme. Last year we made peace polls that were auctioned at the Community Arts Center, designed and created masks, and self-published a botanical illustration book with illustrations contributed by club members. Projects for this year will be developed with member input. All students are welcome. We will meet every other week (dates to be determined) for approximately 90 minutes.

Brave Initiative Team

Advisor: Amy Macechko - macechkoa@talawanda.org

Description:

The Brave Initiative Team is sponsored by the Coalition for a Healthy Community - Oxford Area and is the middle school segment of the Youth Action Team for a Healthy Oxford Area. This group of students focuses on building leadership skills and promoting the value of living a drug-free lifestyle. Through the promotion of positive messaging and working with students at Talawanda High School and Miami University, these students are the voice of substance use prevention for their peers. We meet during lunch periods and some after school/evening meetings are also scheduled. All students are welcome!

Builders Club

Advisors: Amy Macechko and Briana Von Mizener - macechkoa@talawanda.org,
vonmizenerb@talawanda.org

Description:

Builders Club is part of the Kiwanis Organization. Members of Builders Club are involved in the school and the community as service leaders. Some community service projects the TMS Builders Club has been a part of in the past are Kiwanis Pancake Day and Kiwanis Food Drive. Students have also had the opportunity to be leaders in service projects at TMS. Builders Club is open to all students.

Craft Club

Advisors: Cherie Day and Carolyn Ratliff - dayc@talawanda.org, ratliffc@talawanda.org

Description:

Do you like to meet new people and enjoy hands-on projects? Join us for meetings twice/month after school until 3:45 (dates to be determined by members) for fun and creativity! Projects will be determined by club members and all middle school students are welcome.

Destination Imagination

Advisor: Bob Black - di@talawanda.org

Description:

DI is a STEAM (STEM + the Arts!) activity open to all kindergarten through 12th grade students. Students form teams of up to 7 members, select one of 7 challenges created each year, and work together to develop a solution that will be presented at the regional tournament taking place at the end of February. Each team needs at least one Team Manager (often a parent or teacher) who helps keep the team on track. Most teams start meeting weekly, at most, in September or October.

Engineering Club

Advisor: Larry Brock - brockl@talawanda.org

Description:

7th and 8th grade students who strive to be inspired and inventive; who enjoy overcoming obstacles; and who seek to discover, analyze, and solve problems; can spend time with the Engineering Club. Students can have the opportunity to explore various engineering disciplines and principles. Opportunities for collaboration with various university and/or professional groups. No experience required. Engineering club will be on Tuesdays **OR** Thursdays beginning in October.

Fishing Club

Advisor: John Brinck - brinckj@talawanda.org

Description:

FCCLA

Advisor: Sharon Gregory - gregorys@talawanda.org

Description:

Family, Career and Community Leaders of America (FCCLA) is a dynamic and effective national student organization that helps young men and women become leaders and address important personal, family, work and societal issues through Family and Consumer Sciences Education and is open to students grades 7-12 who have had at least one FCS/Life Skills class and pays the \$25.00 dues.

FCCLA: The Ultimate Leadership Experience is unique among youth organizations because its programs are planned and run by members. It is the only career and technical in-school student organization with family as its central focus. Participation in national programs and chapter activities helps members become strong leaders in their families, careers and communities.

FCCLA members from the high school along with the adviser will be meeting with TMS students once a month here at TMS. Students have the opportunity to participate in service projects, fundraising, leadership activities, trips, and competition throughout the school year.

Gamers Club

Advisors: Kelly Case and Tracy Vu - casek@talawanda.org, vut@talawanda.org

Description:

Calling all tabletop game fans! Do you love to play board games and/or card games? Looking for a place to try out the new Magic deck you just put together or a place to trade Pokemon cards? Want to test a new chess strategy? Maybe you are looking to join a dungeons and dragons campaign, but don't know where to start? Then this is the place for you. Once a week, TMS will have a place for you to do all things tabletop. See Mrs. Vu or Mrs. Case for details and be watching out for announcements. We plan to start in mid-September.

Guitar Club

Advisor: Raj Sundram - sundramr@talawanda.org

Description:

Have you ever wanted to be able to play your favorite songs, show off your mad shred skills or simply write your own music? Guitar Club is the stepping stone for you! Students will meet two to three times a month TUESDAY FROM 2:45- 3:45 to learn simple, intermediate and advanced songs, scales and concepts. A personal guitar, electric or acoustic, is not a must, but having your own will always expedite your progress. All are welcome, be ready to practice and to play!

K'NEX Competition

Advisors: Mary Ruppert and Larry Brock - rupperrtm@talawanda.org, brockl@talawanda.org

Description: This competition is provided by Thermo Fisher. Students are given a STEM Design Challenge. Last year's challenge was "to make the world healthier by treating cancer." Students were to create a nano-machine that could capture and treat a cancer cell or tumor of the team's choice. The prototype is constructed from K'NEX materials provided by Thermo Fisher. Team members need to research and demonstrate how their machines or prototypes work. We will be given the STEM Design Challenge in January and have one month to be ready to present our research and prototypes.

Peer Mediation

Advisor: Laura Jewett - jewettl@talawanda.org

Meeting Day and Time: During tutorials (no after school meetings)

Description:

Peer mediators assist other students with working through and resolving conflict. Students are trained as peer mediators and assist others in solving problems at school. 8th Grade Mediators can also become members of the SAVE Club (Students Against Violence Everywhere) and/or become Peer Support Volunteers helping younger students resolve social or academic concerns. Peer Mediation will meet during the school day. The dates and times are TBD.

Polar Brrrave

Advisors: Paul Stiver - stiverp@talawanda.org

Description:

Polar Brrrave (think brrrrrrrr!) is a running club that will meet twice a week starting after Thanksgiving Break to keep students active and running. Anyone in grades 6-12 may participate. We will start after the break and run through December and January when school is in session. We will run outside, so bundle up!!

Student Council

Advisor: John Brinck - brinckj@talawanda.org

Meeting Day and Time: Typically 2x a month after school until 3:30 (Tuesdays)

Description:

Students run for grade level representative and are elected by their peers. Student Council represents TMS and students are able to fundraise and organize events for TMS. Student Council has sponsored

the 8th grade school dance, the Thanksgiving Senior Citizen Luncheon, Veteran's Day activities, Staff Appreciation, and many more.

Yearbook

Advisor: Suzanne Burch - burchs@talawanda.org

Students are responsible for creating the school yearbook. Yearbook volunteers take pictures of students' experiences throughout the day. They attend after school/evening events to capture images of our athletics and other activities. Students then organize the pictures strategically and create the school yearbook.

Activities

Band - Mr. Gonzales: gonzalesr@talawanda.org

Chorus and Bel Canto - Mrs. Case: casek@talawanda.org

Orchestra - Mrs. House-Shumway: shumwayc@talawanda.org

Sports

Questions about TMS sports contact Mrs. Klenk: klenke@talawanda.org

Football, Cheerleading, volleyball, Cross Country, Boy's Basketball, Girls Basketball, Wrestling, Track

**Activities/clubs will only occur based upon the availability of a sponsor/supervisor*

Symptoms of Coronavirus (COVID-19)

Know the symptoms of COVID-19, which can include the following:



Symptoms can range from mild to severe illness, and appear 2–14 days after you are exposed to the virus that causes COVID-19.

**Seek medical care immediately if someone has
Emergency Warning Signs of COVID-19**

- Trouble breathing
- Persistent pain or pressure in the chest
- New confusion
- Inability to wake or stay awake
- Bluish lips or face

This list is not all possible symptoms. Please call your healthcare provider for any other symptoms that are severe or concerning to you.



**Centers for Disease
Control and Prevention**
National Center for Emerging and
Zoonotic Infectious Diseases

cdc.gov/coronavirus



PublicSchoolWORKS

A Safety & Regulatory Compliance System



Stay Safe Speak UP!

(Remain Anonymous)

Call or go online today to report harassment, threats, suspicious behavior or other concerns which may jeopardize the safety of students, employees or school facilities.

Your message is very important in helping us maintain a safe school environment.



It's easy!

Phone

1. 866.listen2me (toll free)

Online

1. Go to www.talawanda.net
2. Click on Health & Safety
3. Click on Safe School Help Online

Report these safety concerns:

- Weapons
- Drugs / Alcohol Abuse
- Suspicious Behavior
- Suicide / Self Abuse
- Problem Relationships
- Sexual Assault
- Fights / Violence / Abuse
- Harassment / Threats
- Theft / Vandalism
- Health Concerns / HIV / AIDS



24/7/365

Available all day, every day,
from anywhere.

online or
1.866.listen2me